

PORTOFOLIO



PROJECTS OVERVIEW

UP-SITE TLV

YIN TOWN

VERTICAL FARMING

SPORTS AND RECREATION HALL

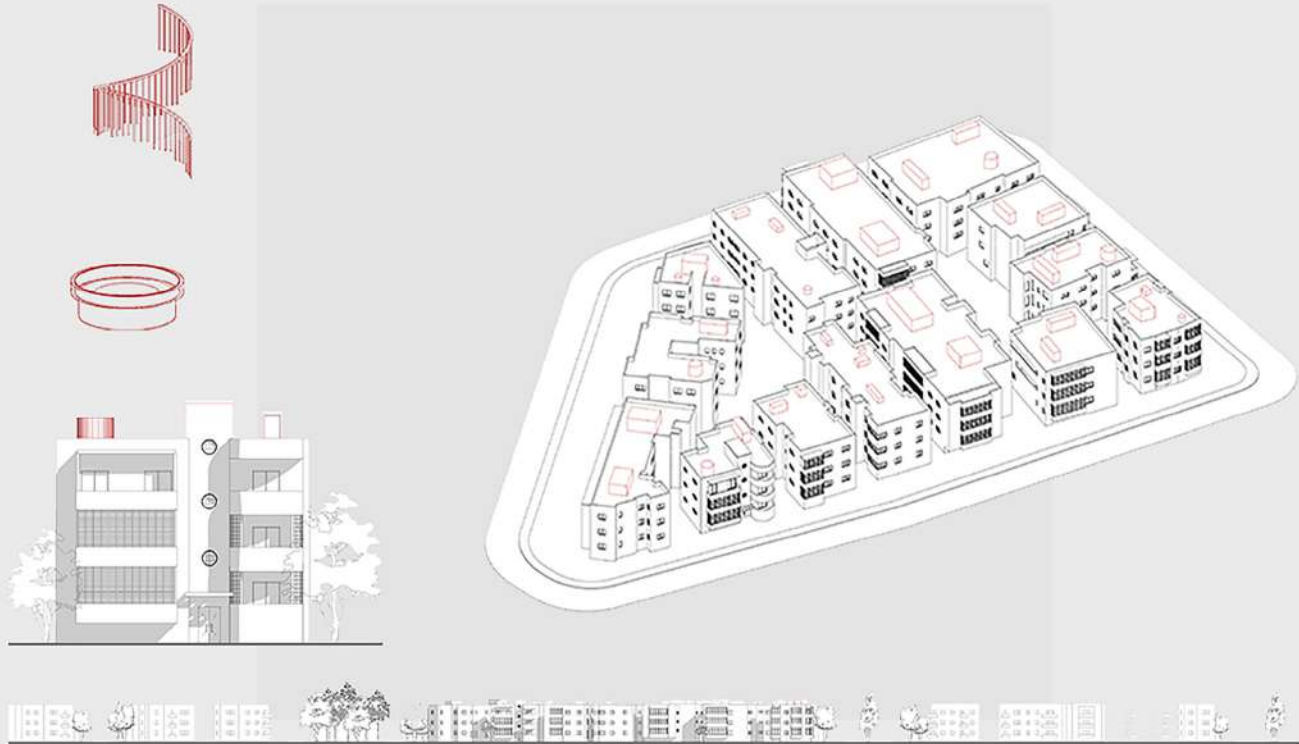
THE SCHOOL OF MUSIC AND BALLET

PR-TOPIA COHOUSING

BOTANICAL MUSEUM

CONSERVATION AND RESTORATION PROJECT

UP-SITE TEL-AVIV



OUR CITIES ARE GROWING - FAST AND IN EACH DIRECTIONS: INTO THE SURROUNDING LANDSCAPES; WITHIN THE SUBURBS AND BY ADDING HOUSES TO EVERY SINGLE REMAINING PLOT OF THE INNER CITY. IN THIS STRUGGLE, TORN BETWEEN PROBLEMATIC SPRAWL OUTSIDE AND ODD LAND PRICES INSIDE, I WAS DEALING WITH ONE OF OUR CITIES REMAINING POTENTIALS, UNSEEN FROM THE STREETS OFTEN OVERLOOKED BUT OF GROWING RELEVANCE:

PLOTS UP IN THE AIR, SPACE ON TOP OF HOUSES, STRUCTURES OR ROOFTOPS - NOT AS THE LIMIT, BUT AS A NEW GROUND. ALREADY TODAY, MORE AND MORE EXTENSIONS ARE HAPPENING ON TOP OF EXISTING CITY STRUCTURES, CREATING A VERTICAL EXTENSION, A NEW UPPER SIDE OF THE CITY. BUILDING ON TOP RAISES QUESTIONS OF HERITAGE AND ENGINEERING BUT ALSO OF AN ARCHITECTURAL GESTURE IN RELATION TO WHAT IS ALREADY THERE AND WHAT SHOULD BE ENVISIONED IN OUR TIME, UPDATING THE CITY.

TEL AVIV IS A THRILLING EXAMPLE OF BOTH THIS NECESSITY AND ACTUAL PRACTICE. KNOWN FOR ITS HERITAGE FROM MANY ARCHITECTS WHO STUDIED AT BAUHAUS AND DESIGNED HOUSES FOR THE CITY IN THE 1920s, TEL AVIV TODAY IS IN NEED OF ENORMOUS AMOUNT OF SPACE AND ADDS FLOORS TO EXACTLY THOSE EXISTING BAUHAUS BUILDINGS WAS ONE OF THE MAIN PROBLEMS OF THIS PROJECT.



UTOPIIC - YIN TOWN



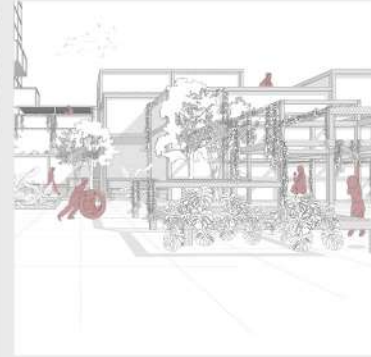
ADAPTIVENESS MAKES A CITY RESILIENT. 'YIN TOWN' IS THE RE-IMAGINING OF A RESILIENT CITY INSPIRED BY THE ANCIENT CHINESE HISTORY OF YIN AND YANG. YIN MEANS LIFE, SO WILL THIS UTOPIAN URBAN CONCEPT WILL BE CONCEIVED. THE PROJECT STANDS AS A SPECULATIVE PROPOSAL OF A RESILIENT CITY THAT ADAPTS TO THE DISPARITY OF ENVIRONMENTAL QUALITY, CULTURAL DIFFERENCES, DESIRES AND HUMAN NEEDS. THERE'S NO DOUBT THAT THE POPULATION IS GROWING AND THAT IS INEVITABLE. THE LAND HAS A LIMIT, A PHYSICAL LIMIT, AND ONE OF THE ANSWERS TO THIS PROBLEM WILL BE TO GO UP.

VERTICAL FARM

CALLING ON AGRICULTURE TRADITIONS OF GJAKOVA

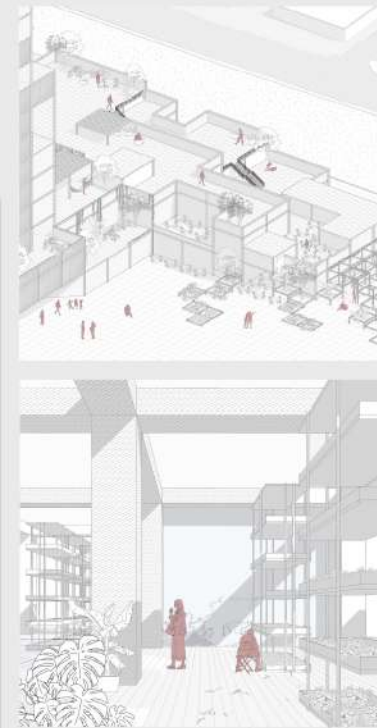
WHERE ARE THE FIELDS AND THE BUSHES? - ASKS ONE OF THE MOST PREEMINENT ALBANIAN ARTISTS, MUHARREM QENA, IN ONE OF THE GREATEST SONGS OF OUR COUNTRY'S CULTURE.

GJAKOVA, NOW AN ERRATICALLY MODERNIZING CITY WHILE AT THE SAME TIME ORDINARY, WORN-DOWN AND POLLUTED, HAS ONCE BEEN A GREAT LAND OF AGRICULTURE. DURING THE LAST FEW YEARS, AS A CONSEQUENCE OF AN INFLUX OF RETURNING REFUGEES AFTER THE WAR, AND NEW INHABITANTS COMING EVERY DAY FROM EACH PART OF THE COUNTRY, GJAKOVA HAS BECOME A LAND OF URBAN CHAOS, FILLED WITH HIGH-RISE BUILDINGS IN NO ORDER, ALL BUILT ON FARMLAND. THE RESULT WAS A RANDOM SPREAD AND DEVELOPMENT OF THE CITY, CAUSING SERIOUS FUNCTIONAL AND STRUCTURAL PROBLEMS FOR THE FUTURE.



WITHIN THE LATEST FEW YEARS, THE POPULATION HAS DOUBLED AND IT IS INCREASING PROGRESSIVELY, LEADING TO AN EXPANSION OF THE CITY'S AREA. GJAKOVA NOW IS CONCEPTUALIZED AS A POST-CONFLICT CITY, A DESIGNATION THAT HAS EMERGED IN VARIOUS STUDIES OF URBAN PLANNING (VÖCKLER, 2008). SINCE BUILDINGS HAVE NOW TAKEN PLACE IN THE FORMER HARVESTING FIELDS AND FARMLANDS, THE CITY IS BECOMING MORE AND MORE POLLUTED, ALWAYS IN LACK OF GREEN AREAS. IN THE LAST YEARS, GJAKOVA HAS BEEN ONE OF THE MOST POLLUTED CITIES AROUND THE COUNTRY.

BEING INSPIRED BY THE WONDERFUL AGRICULTURE TRADITIONS OF GJAKOVA, WE HAVE DECIDED TO TAKE GJAKOVA BACK TO WHEN IT USED TO BE A FARMLAND CITY, A HUNDRED YEARS AGO. BY ADDING PIECES OF THE PURE OLD GJAKOVA, WE WILL NOW BE LOOKING AT THE FUTURE OF THE CITY'S PAST.



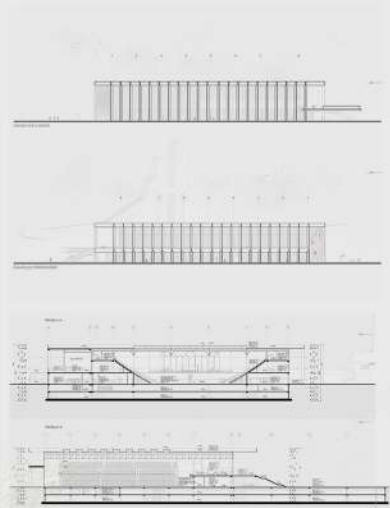
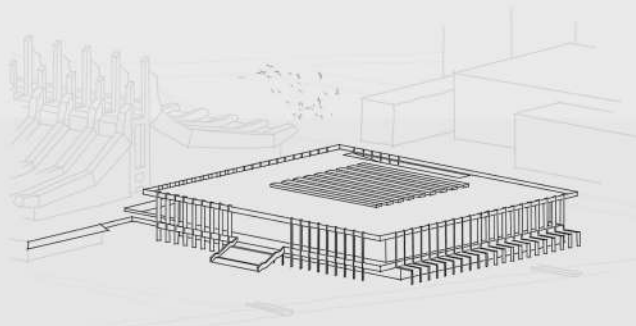
SPORTS AND RECREATION HALL IN THE COMMUNITY CENTER

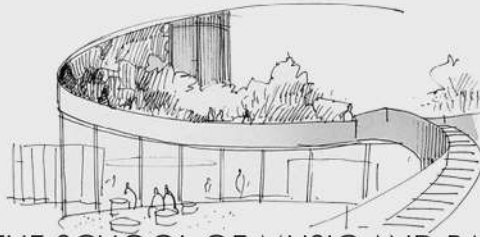
THE FIRST PHASE OF THE CONCEPT INCLUDES THE ANNOUNCEMENT OF ITS LOCATION, CAPABILITIES, ADVANCES AND POTENTIAL WHICH WILL THEN BE MADE AND REFLECTED IN THE QUICK SKETCHES. FAMILIARITY WITH THE LOCAL ARCHITECTURE, THROUGH OLD PHOTOS AND PLANS WAS A KEY ELEMENT THAT HELP THE PROJECT ACCORDING TO THE SPIRIT AND IDENTITY OF THE PLACE. THE SKETCHES SEEN ON THE SHEET ARE ONLY THE FIRST ELEMENTS OF THE PROJECTS, WHICH ARE LATER SIMPLY DELAYED AND RATIONALIZED TO ARRIVE AT THE FINAL VERSION.

THE SPORTS AND RECREATIONAL GYM WAS BORN AND INSPIRED BY EVERY CORNER, CORNER, SPIRIT OF THE BUILDING IN PRISHTINA, AND IS ALSO CREATED BY KOSOVAR ARCHITECTS. THEREFORE, OUR CONCEPT, BEYOND ARCHITECTURE, IS RELATED TO THE MEANING OF KOSOVO'S HISTORICAL ARCHITECTURAL HERITAGE WITH QUALITY, AND NOT AS A BURDEN OF 'BACKWARDNESS'. WE ALSO HAVE A MODERN ARCHITECTURE, MADE BY ALBANIAN ARCHITECTS, WHOSE GENERALITY LIES IN THE NATURALNESS AND LEGITIMACY WITH THOSE WHO THINK AND CREATE SUCH AN ARCHITECTURE.

THE DEVELOPMENT OF THE CONCEPT WILL THEN TAKE PLACE IN THE FURTHER ANALYSIS OF THE ICONIC OBJECTS OF THE PALACE OF YOUTH AND ARCHITECTURE THAT YOU SHOULD PRESENT HIS TEMPORARY OBJECTS TOGETHER WITH THE ANALYSIS OF THE DYNAMICS AND THE DIRECTIONS OF THE MOVEMENTS OF THE TASK.

THEREFORE, THE PROPOSED OBJECTS REFLECT A SYNTHESIS OF HERITAGE AND CONTEMPORARY, IN TERMS OF THE ESSENTIAL RELATIONSHIP BETWEEN FORMS AND CONTENTS, AND NOT IN TERMS OF THE OFFICIAL IMITATION OF A WORLD MODEL.





THE SCHOOL OF MUSIC AND BALLET

THE MAIN PURPOSE OF THIS PROJECT IS TO CREATE A SCHOOL THAT MEETS THE HIGHEST STANDARDS OF ENVIRONMENTAL QUALITY AND EDUCATION, SO WE TRIED THROUGH THE URBAN DEVELOPMENT PLAN TO POSITION IT AS A PUBLIC BUILDING WITHIN A PROBLEMATIC AND BUSY AREA SUCH AS THE NEIGHBOURHOOD LAKRISHTE, IN PRISHTINA. THE SCHOOL OF MUSIC AND BALLET WAS BORN AND INSPIRED BY THE THEORY OF LOUIS KAHN, ONE OF THE LEADING MODERN ARCHITECTS, BELIEVED TO BE ONE OF THE MOST POWERFUL MINDS OF ARCHITECTURE OF ALL TIME, ONE WHO GAVE MEANING AND SPIRIT TO ARCHITECTURE. GIVEN THIS FACT, OUR CONCEPT BEGINS WITH THE QUESTION:

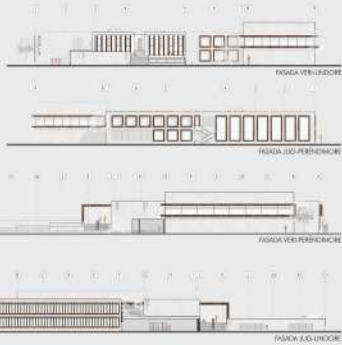
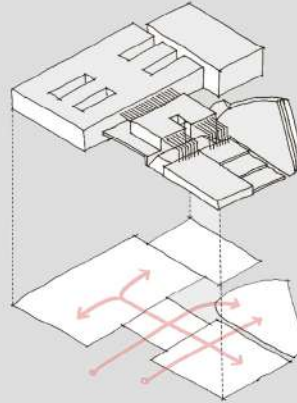
WHAT DOES THIS BUILDING WANT TO BE?

THERE IS A GENERAL PRINCIPLE BEHIND EVERYTHING THAT EXISTS, AND THAT IS THE ORDER. WE WILL SOLVE THIS CONVERGENCE AND CONVERGE THROUGH THREE MAIN AXES:

FIRST, IT IS STARTING FROM THE URBAN ASPECT, THE ENTRANCE FROM THE TRAFFIC CIRCLE, AS ONE OF THE MOST FREQUENTED ROADS OF THE CAPITAL AND THE TRANSVERSE AXIS WHICH STRONGLY DIRECTS THE FUNCTIONAL ORGANIZATION, DUE TO THE POSITION AND CONNECTION OF THE OBJECT TO THE LOCATION, AND AT THE SAME TIME DETERMINES THE CHRONOLOGICAL IMPLEMENTATION OF EACH COMPONENT OF THE PROGRAM FROM THE GIVEN TASK.

SECOND, FROM THE CIVIL SIDE, THE SCHOOL PLAYS THE ROLE OF A PUBLIC BUILDING WHERE A REDISCOVERY OF THE ARCHITECTURE OF MASS AND STRUCTURE CREATES A CALL FOR THE RETURN OF MONUMENTALITY TO ARCHITECTURE. AND IT WAS THROUGH THIS FORMULA THAT WE ATTEMPTED TO CONCEPTUALIZE A BUILDING THAT WOULD EMERGE AS A CULT OF KNOWLEDGE AND LEARNING.

THIRD, FROM WITHIN THE SCHOOL EXPRESSES A WHOLLY FRIENDLY IDENTITY. THE ARCHITECTURE OF MASS AND STRUCTURE IS A POWERFUL CREATOR OF SHADOW, AND KAHN BELIEVED THAT NATURAL LIGHT DETERMINES THE QUALITY OF SPACES AND THAT SPACE DOES NOT EXIST WITHOUT IT. ACCORDING TO HIM, ARTIFICIAL LIGHT CAN NEVER PROVIDE THE NUANCES OF THE MOOD THAT ARE CREATED IN CERTAIN DAYS AND SEASONS. IN OUR PROJECT THIS HAS BEEN ACHIEVED THROUGH VOLUMES INTERCONNECTED WITH CORRIDORS AND PASSAGES AND VARIOUS FACADE DETAILS THAT CREATE A BEAUTIFUL PLAY OF SHADOW AND LIGHT. IN ADDITION, THE FACILITY ALSO INCLUDES ATRIUMS FOR THE PURPOSE OF MAXIMIZING LIGHTING AND CREATING ATTRACTIVE SPACES FOR CHILDREN.





1. COMMON SPACES



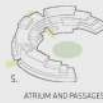
2. HOLDING UNITS



3. VERTICAL AND HORIZONTAL MOVEMENTS



4. GREEN ROOF



5. ATHLUM AND PASSAGES



6. PAVILIONS



7. PATHS AND ENTRANCES



8. CREATIVITY

CO-HOUSING

THE CONCEPT OF MODULARITY

THE VERY FACT THAT THE LOCATION IS LOCATED CLOSE TO THE CITY OF PRIZREN WHILE AT THE SAME TIME IS BETWEEN NATURE AND THE QUIET ENVIRONMENT OF THE SUBURBS, POSES A GREAT POTENTIAL IN CREATING A UNIQUE PLACE FOR AN ALTERNATIVE WAY OF LIFE. REGULAR INTERACTION AND MUTUAL SUPPORT ARE THE PRIMARY BENEFITS OF COEXISTENCE, THEREFORE MODULARITY PROMOTES LIVING CLOSE TO EACH OTHER. THE GROUPING OF MODULAR UNITS AND THEIR PLACEMENT IN HEIGHT AIMS TO LEAVE MINIMAL TRACES, RESPECTING THE INITIAL APPROACH TO PRESERVE THE NATURE AND SURFACE OF THE LAND WHICH AS AN INTEGRAL, OFFERS THE POSSIBILITY OF USE AS AN ASSET FOR THE CULTIVATION OF AGRICULTURAL CROPS BY WHICH CAN BENEFIT THE WHOLE COMMUNITY TOGETHER. MODULARITY AS A BASIC CHARACTERISTIC HAS THE SPEED OF CONSTRUCTION AND BEING MORE PRACTICAL. A MASS-PRODUCED STANDARDIZED MODULAR BUILDING SYSTEM WILL HELP REDUCE OVERALL PROJECT COSTS BY MAKING IT MORE AFFORDABLE.

FLEXIBILITY

"ONE SIZE DOES NOT FIT ALL". THIS IS THE MAIN REASON WHY WE PROPOSE TO OFFER MANY TYPES OF MODULAR APARTMENTS INSTEAD OF STANDARD, FAMILY HOUSES. WHETHER IT IS A YOUNG FAMILY OR A FAMILY OF FOUR, A RETIRED COUPLE OR A GROUP OF STUDENTS OR YOUNG PEOPLE THIS TYPOLOGY OFFERS OPPORTUNITIES FOR EVERYONE. AND IF FOR SOME REASON, FOR EXAMPLE IN CASE OF INCREASING THE NUMBER OF FAMILY MEMBERS, ANOTHER LIVING SPACE IS NEEDED, THE MODULAR UNITS CAN SIMPLY BE CHANGED OR ADAPTED WHILE STILL BEING PART OF THE SAME COMMUNITY. THE PROJECT WILL BE DEVELOPED IN AN ARCHED SHAPE ATTEMPTING A FUSION WITH THE TERRAIN SO AS TO STRENGTHEN THE CONNECTION WITH NATURE AROUND THE PERIMETER AS WELL AS WITH THE INNER COURTYARD AS A SPACE DEDICATED TO JOINT ACTIVITIES AND SOCIALIZATION IN THE OPEN. SUCH A SHAPE WOULD ALSO CONTRIBUTE TO THE CREATION OF VISAGES IN THE DIRECTION OF THE RIVER AND THE HILLY TERRAIN.



FORMING A SPACE THAT CREATES INVITATIVE ENVIRONMENT FOR EVERYONE



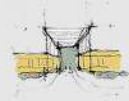
CHANGING COMMUNITY FUNCTIONS OF LOCATED ON BOTH SIDES OF THE COURTYARD



A STRONG RELATIONSHIP WITH NATURE



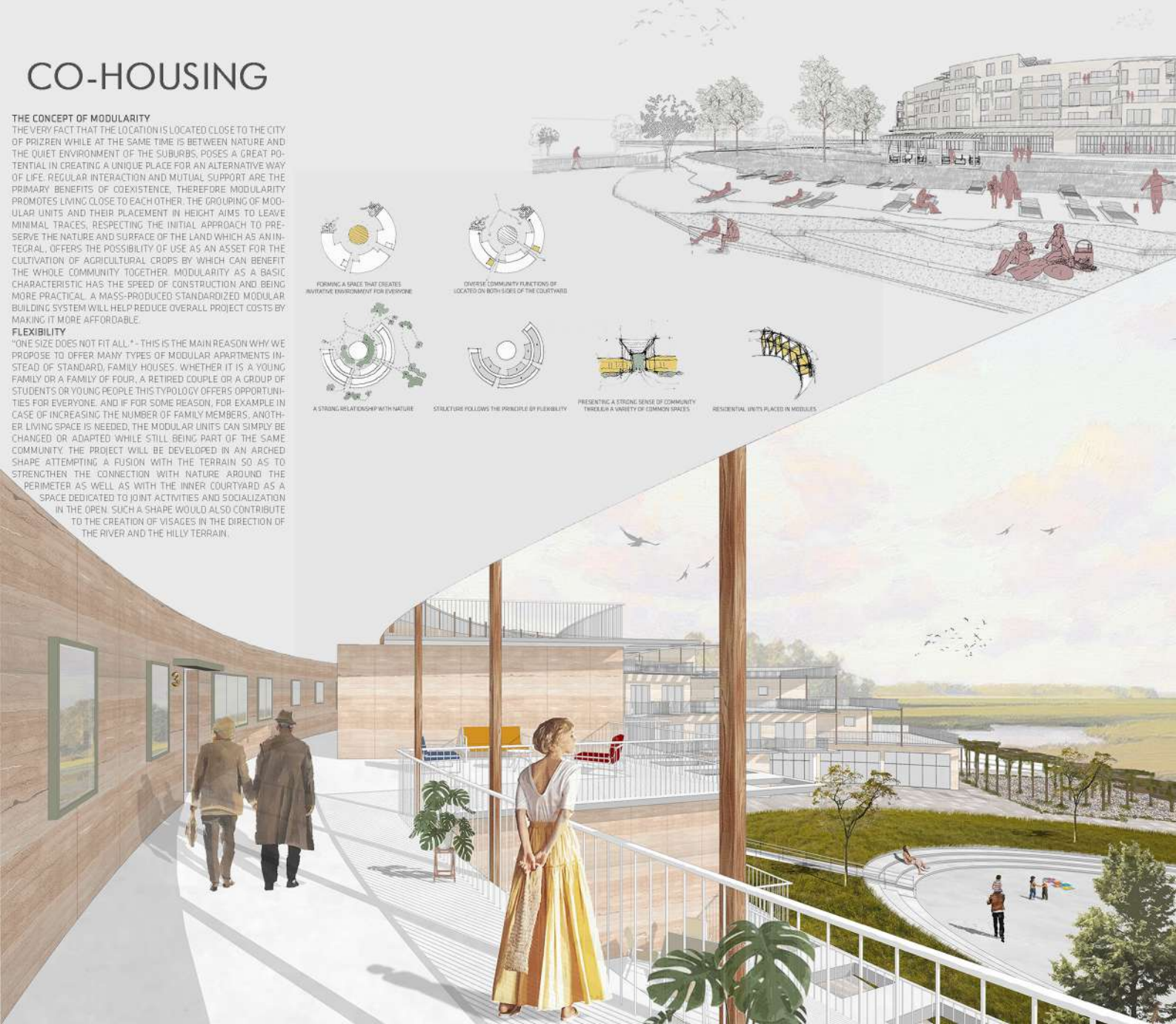
STRUCTURE FOLLOWS THE PRINCIPLE OF FLEXIBILITY



PRESENTING A STRONG SENSE OF COMMUNITY THROUGH A VARIETY OF COMMON SPACES



RESIDENTIAL UNITS PLACED IN MODULES

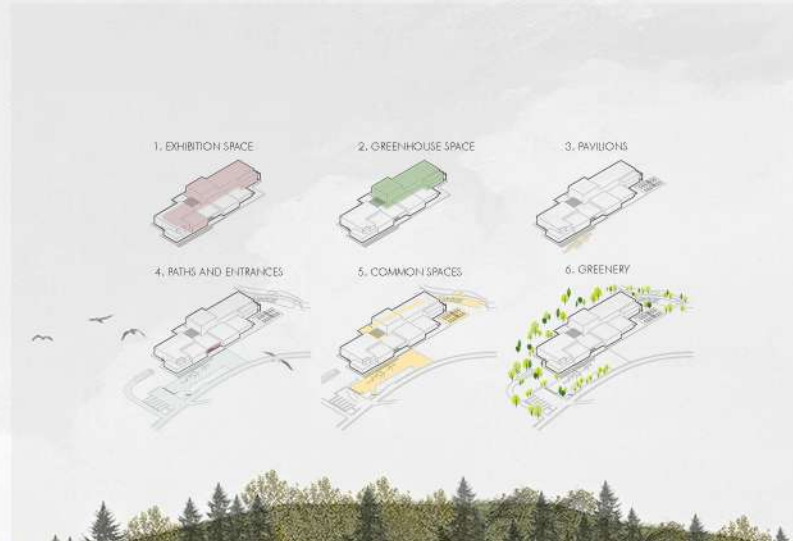


BOTANICAL MUSEUM



THE BOTANICAL MUSEUM WAS BORN AND INSPIRED BY NATURE, ITS CONCEPT DERIVES FROM UNDERSTANDING AND STUDYING THE LOCAL FLORA, THE VARIETY AND UNIQUENESS OF WHICH SHOULD BE PRESERVED AND PROMOTED. THE MAIN GOAL OF THIS PROJECT, APART FROM PROTECTING THE LOCAL PLANTS AND ENDANGERED SPECIES, IS TO CREATE A MUSEUM OF GREENERY AND NATURE THAT WILL ALLOW PEOPLE TO STUDY THE HABITAT. AT THE SAME TIME, THIS MUSEUM WILL SERVE AS A RESEARCH CENTRE THAT PROMOTES SCIENTIFIC RESEARCH, EXTENDS THE PUBLIC INTEREST ON PLANTS AND SPREAD THE ACHIEVEMENTS OF SCIENCE.

WE AIM TO INSPIRE VISITORS TO BECOME OBSERVERS. THE ROLE THAT THE SENSES AND EMOTIONS PLAY IN OUR ARCHITECTURAL EXPERIENCE IS EMPHASIZED THROUGH DESIGN AND THE BUILDING ITSELF ALLOWS AN EMOTIONAL EXPERIENCE. NATURE, ON THE OTHER HAND, PROVIDES THE ULTIMATE METAPHOR, IN FORM, SOUND, SIGHT AND SCENT, THUS CREATING A PLACE DETACHED FROM THE CITY NOISE AND TRAFFIC.



CONSERVATION - RESTORATION PROJECT OF THE TRAIN STACION BUILDING IN FERIZAJ

THE TRAIN STACION BUILDING IN FERIZAJ IS ONE OF THE OLDEST BUILDINGS IN THE CITY, WHICH REPRESENTS A TREASURE OF THE HISTORICAL, CULTURAL AND ARCHITECTURAL HERITAGE OF THE COUNTRY. THE BUILDING HAS SURVIVED THE PERIODS OF NEGLECT AND DESTRUCTION OVER THE YEARS, DIFFERING FROM OTHER BUILDINGS IN THE CITY. PRESERVING ITS FUNCTION FOR YEARS, IT REPRESENTS A TRACE OF A COUNTRY DEVELOPED IN SPECIAL HISTORICAL, SOCIO-ECONOMIC, ETHNIC AND CULTURAL CONDITIONS. BASED ON THE POTENTIAL IT HAS TO BE A FUTURE MOBILITY CENTER IN THE CITY, THE SPACES OFFERED BY THE BUILDING DO NOT MEET THE NEEDS OF A CONTEMPORARY STATION. THEREFORE, THE CONCEPT OF OUR CONSERVATION-RESTORATION PROJECT IS BASED ON REPAIRING THE IDENTIFIED DAMAGES AND ADDING THE NECESSARY SPACES FOR A PRESENT-TIME TRAIN STATION. THIS SPACE IS DESIGNED TO CREATE A PLEASANT ENVIRONMENT FOR PASSENGERS, WHO ARE OFFERED FLEXIBLE SPACES FOR SITTING AND WAITING, A RAISED PLATFORM FOR READING, SMALL SHOPS, CAFES, FOOD AND OTHER NECESSARY SERVICES WITHIN THE TRAIN STATION.

OUR CONCEPT ALSO INCLUDES A BRIDGE THAT CONNECTS THE SQUARE "ADEM JASHARI" WITH THE REST OF THE CITY, PASSING THROUGH THE NEW ADDITION OF THE BUILDING, OVER THE RAILWAY. THE RAILWAY HAS IN FACT DIVIDED THE CITY IN TWO PARTS THROUGHOUT HISTORY, AND THIS BRIDGE WILL SERVE TO CREATE A DIALOGUE BETWEEN THE TWO PARTS AND TO CONNECT THE BUILDING WITH THE COMMUNITY. THE BRIDGE UNITES THE INHABITANTS OF THE CITY, UNDER THE POETIC EFFECT OF THE METAL STRINGS, IT ENABLES INTERACTION BETWEEN PEOPLE AND OFFERS A MOMENT OF REFLECTION FROM THE RHYTHM OF THE RAPID TRANSFORMATION OF THE CITY. THE METAL STRINGS ARE RECYCLED FROM THE OLD RAILWAYS, AND IN ADDITION TO THE AESTHETIC ASPECT AND ATTRACTIVENESS, THEY HAVE BEEN SELECTED AS A DESIGN TO FURTHER STRENGTHEN THE CONCEPT OF CONNECTING THE BUILDING WITH THE COMMUNITY. THIS CONSTELLATION OF PUBLIC INTERVENTIONS, WHETHER MINIMAL OR MAJOR, CONTRIBUTES TO THE 'SPIRIT OF THE CITY' AND TO THE CREATION OF A NEEDED PUBLIC SPACE IN THE CITY.

