



SHARE TALKS VENICE

3rd October 2019

Università Iuav di Venezia

Palazzo Badoer, Aula Tafuri

Calle della Lacca, 2468,

30125 San Polo, Venezia VE, Italy

5 Credits

recognized by
the CNAPPC.



**Architect
Ian RITCHIE**

Founder Ian Ritchie
Architects, **UK**



**Professor Architect
Enrico FONTANARI**

Delegate for International
Relations and Mobility
Programs, Università Iuav di
Venezia, **Italy**



**Architect
Anna BUZZACCHI**

President Ordine degli
Architetti, Pianificatori,
Paesaggisti E Conservatori
Della Provincia Di Venezia,
Italy



**Architect
Paolo BRESCIA**

Founder OBR Open Building
Research, **Italy**



**Architect
Habibeh MADJDABADI**

Owner and Principal Habibeh
Madjdabadi Architecture Office,
Iran



**Architect
Emre AROLAT**

Co-founder Emre Arolat
Architecture, **Turkey**



**Architect
Alberto TORSELLO**

Founder and Director TA
Architettura, **Italy**



**Architect
Përparim RAMA**

CEO and Founding Director
of 4M Group, **UK**



**Architect
Fokke MOEREL**

Partner MVRDV, **The
Netherlands**



Alberto LAGO

Sales Manager Şişecam
Flat Glass, **Turkey**



Esra AYDINOĞLU

Architectural Glass Product
Manager Şişecam Flat
Glass, **Turkey**

Organizers



abplus
events

Co-organizer



Institutional Partner

I
-
U
-
A
-
V

Università Iuav di Venezia

Official Partner



**ŞİŞECAM
FLAT GLASS**

Media Partners



**HUMANS OF
ARCHITECTURE**



venice.share-architects.com



SHARE TALKS VENICE CONFERENCE AGENDA

3rd October 2019
Palazzo Badoer,
Aula Tafuri

Calle della Lacca, 2468,
30125 San Polo, Venezia VE, Italy

13.00 - 14.00

GUEST REGISTRATION

MESSAGE OF THE ORGANIZERS & SUPPORTERS

14.00 - 14.30



**Professor
Architect Enrico
FONTANARI,**

*Delegate for International
Relations and Mobility
Programs, IUAV University of
Venice, Italy*



**Architect Anna
BUZZACCHI,**

*Presidente dell'Ordine degli
ARCHITETTI, PIANIFICATORI,
PAESAGGISTI E
CONSERVATORI DELLA
PROVINCIA DI VENEZIA, Italy*

Architect Andreea Movila, Editor SHARE Architects, Romania

Esra AYDINOĞLU, Product Manager, Şişecam Flat Glass

**MODERATOR Architect Përparim RAMA, CEO and Founding Director of
4M Group, UK**

14.30 - 14.55

**AUTHOR LECTURER Architect Përparim RAMA, CEO and Founding
Director of 4M Group, UK**

BOOK LAUNCH

"Designing the Profile of the Future Architect"

*An international editorial project initiated via **SHARE International Architecture Forums** - that
are organized every year in 10 locations from Eastern and Central Europe- will address the most
challenging issues and challenges of the profession.*

EDITOR Architect Andreea Movila-Robu

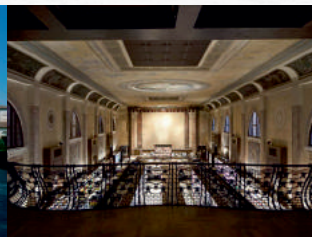
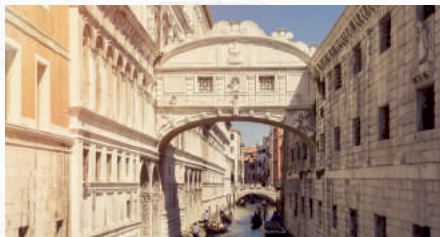
**AUTHOR GUESTS Architect Ian Ritchie, Architect Habibeh Madjdabdi,
Architect Paolo Brescia**

SESSION 1

14.55 - 16.25

**Architect Alberto TORSELLO, Director - TA Architettura, Italy, one of the most
renowned Venetian architects, founder and director of TA Architecture, he is active
in the field of promotion and care of architectural and cultural heritage since 1994.**

Presentation: "When men used to talk with the stones"



Architect Habibeh MADJDABDI, Owner / Principal Architect Habibeh Madjdabadi Architecture Studio, **Iran**, is one of the most outstanding architects of the younger generation in Iran, with almost 15 years of professional experience.

Presentation: "Multiplicity & Unity"



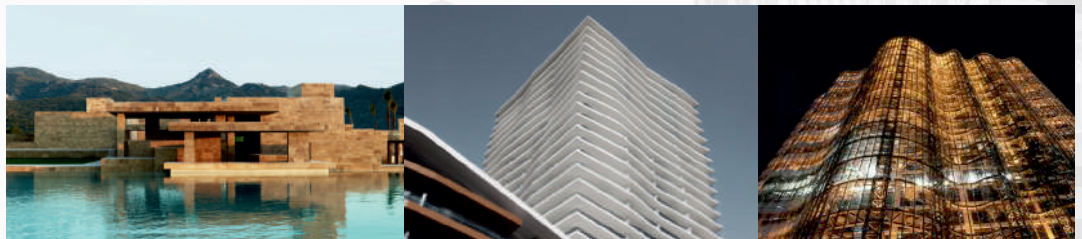
OFFICIAL PARTNER: ŞİŞECAM FLAT GLASS

Alberto LAGO, Sales Manager, Şişecam Flat Glass

Presentation: "New Technologies in Façade Design"

Architect Emre AROLAT, Co-Founder Emre Arolat Architecture, **Turkey**, an office that has built an impressively wide range of works from urban masterplans, airports to residential, cultural buildings and workplaces. Emre Arolat has the ability to bring a unique view on the future of Architecture, he taught at the Advanced Studio at Yale School of Architecture and was the co-curator of the first Istanbul Design Biennale in 2012..

Presentation: "Hybridity - A timeserver, sneaky danger or a matchless opportunity?"

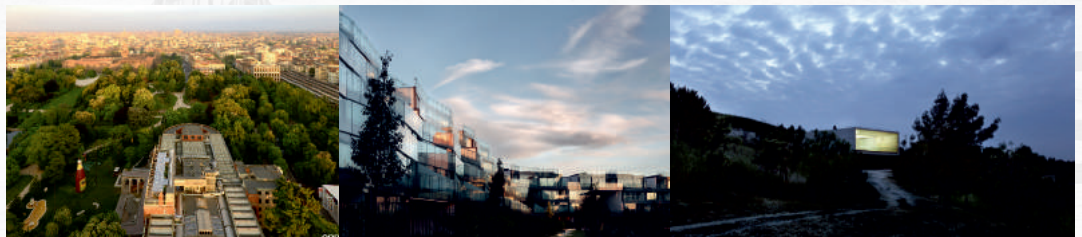


BREAK 16.25 - 16.45

SESSION 2
16.45 - 19.10

Architect Paolo BRESCIA, Partner at OBR – Open Building Research, **Italy**, founded his practice in 2000 with Tommaso Principi. While innovating contemporary living, OBR creates a design network around Milan, London and Mumbai – three of the most important world architectural focus points today – and succeeds very well in doing it given the long list of received awards!

Presentation: "Architecture as collective process"



Architect Fokke MOEREL, *Partner - MVRDV, The Netherlands*, the award-winning architecture studio in the Netherlands, is an architect that leads projects with a focus on public and cultural programmes, transformations and interior design, in the Netherlands, the rest of Europe, and the Americas.

Presentation: "What Architecture can do"

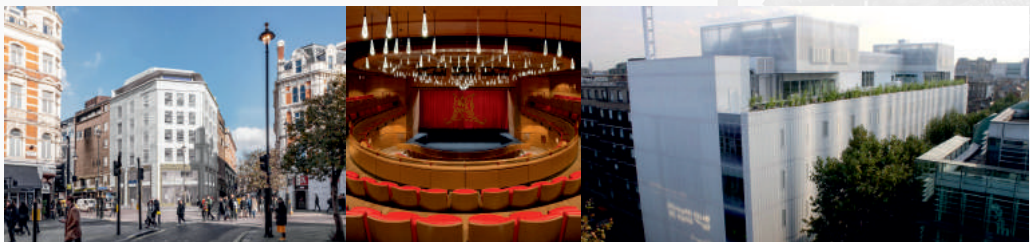


OFFICIAL PARTNER: ŞİŞECAM FLAT GLASS

Esra AYDINOĞLU, *Architectural Glass Product Manager Şişecam Flat Glass*

Architect Ian RITCHIE, *Founder - Ian Ritchie Architects, UK*, one of the world's most thoughtful, original and influential contemporary collaborative architectural practices. The practice is renowned for research and development, and for its innovations. They have more than 30 World Firsts in architectural geometry, engineering and material techniques.

Presentation: "Light, Shadow and Non-Linear Beauty"



DEBATE

MODERATORS: Architect Perparim Rama, Architect Paolo Brescia

GUESTS: Architect Ian Ritchie, Architect Habibeh Madjdabdi, Architect Emre Arolat, Architect Fokke Moerel, Architect Alberto Torsello

CONCLUSIONS 19.10 - 19.15

**CHECK OUT OUR WEBSITE
FOR FURTHER INFORMATION!**

venice.share-architects.com

ŞİŞECAM FACTORY VISIT Şişecam Flat Glass Italy SRL “SHARE – MEET THE PARTNER”

Programme:

- 09:00 Departure from Mestre to Şişecam Porto Nogaro Factory
- 10:30-11:00 Arrival to Şişecam Porto Nogaro Factory, Welcome coffee
- 11:00-12:30 Presentation, Factory Visit, Q&A
- 13:00-14:30 Lunch
- 15:00-16:30 Departure from Porto Nogaro Factory
- 16:30 Arrival to Venice

Address: Via Jacopo Linussio,
2, 33058 San Giorgio di Nogaro UD, *Italy*

ABOUT ŞİŞECAM FLAT GLASS

*Şişecam Flat Glass conducts Şişecam Group's activities in the flat glass sector; it is **Turkey's flat glass market leader** and a pioneering organization in the regional flat glass market. In terms of its production capacity, Şişecam Flat Glass is the **5th largest company in the world and the largest in Europe**. The company conducts activities in 4 main areas: architectural glass (flat glass, patterned glass, mirror, laminated glass, and coated glass); automotive- and other transportation-related glass products, energy glass, and home appliance glass.*

Being the biggest flat glass manufacturer in Europe, the Group meanwhile continued its global investments and currently provides products for the construction, automotive, energy and household-appliance industries through its production plants, partnerships and expanding product range in 10 different countries with a total of 17 factories from Russia to Egypt, from India to Italy.

Since 2016, Şişecam Flat Glass has been producing flat glass, laminated glass and coated glass products in two different plants in Manfredonia and Porto Nogaro in Italy.

Sisecamflatglass.com

Factory visit has limited registration.

Future of Architecture