



# SHARE TALKS VENICE

3<sup>rd</sup> October 2019

IUAV University, Aula Magna,  
Venice, Santa Croce 191

**5 Credits**

recognized by  
the CNAPPC.



**Architect  
Ian RITCHIE,**  
*Founder - Ian Ritchie  
Architects, UK*



**Professor Architect  
Alberto FERLENGA**  
*Rector of University IUAV, Italy*



**Architect  
Anna BUZZACCHI**  
*Presidente dell'Ordine degli  
ARCHITETTI, PIANIFICATORI,  
PAESAGGISTI E CONSERVATORI  
DELLA PROVINCIA DI VENEZIA, Italy*



**Architect  
Alberto TORSELLO,**  
*Director - TA Architettura, Italy*



**Architect  
Habibeh MADJDABDI,**  
*Owner / Principal Architect  
Habibeh Madjdabadi Architecture  
Studio, Iran*



**Architect  
Emre AROLAT,**  
*Co-Founder Emre Arolat  
Architecture, Turkey*



**Architect  
Paolo BRESCIA,**  
*Partner at OBR - Open Building  
Research, Italy*



**Architect  
Fokke MOEREL,**  
*Partner - MVRDV,  
The Netherlands*

Organizers



Co-organizer



Institutional Partner

I  
U  
A  
V  
Università Iuav  
di Venezia

Official Partner



**ŞİŞECAM  
FLAT GLASS**

Media Partners



**HUMANS  
OF  
ARCHITECTURE**



Future of Architecture





# SHARE TALKS VENICE CONFERENCE AGENDA

**3<sup>rd</sup> October 2019**  
**IUAV University**  
Aula Magna  
Venice, Santa Croce 191

**13.00 - 14.00**

## GUEST REGISTRATION

**MESSAGE OF  
THE ORGANIZERS  
& SUPPORTERS**

**14.00 - 14.30**



**Professor  
Architect Alberto  
FERLENGA,**  
*Rector of University  
IUAV, Italy*



**Architect Anna  
BUZZACCHI,**  
*Presidente dell'Ordine degli  
ARCHITETTI, PIANIFICATORI,  
PAESAGGISTI E  
CONSERVATORI DELLA  
PROVINCIA DI VENEZIA, Italy*

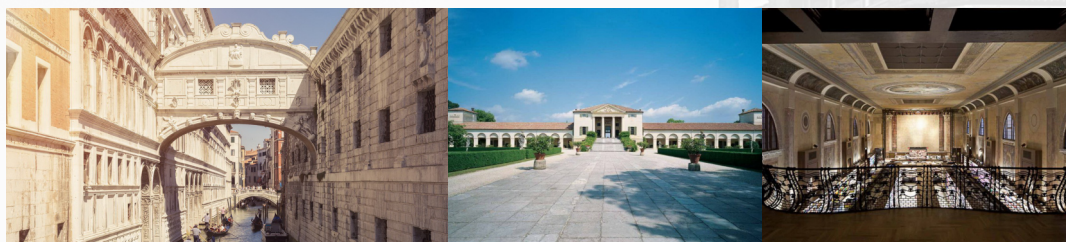
**Florin MINDIRIGIU, Event Director, President of PROEVENT ASSOCIATION**

**Ebru ŞAPOĞLU, Vice President Marketing and Sales, Şişecam Flat Glass**

## SESSION 1

**14.30 - 16.25**

**Architect Alberto TORSELLO, Director - TA Architettura, Italy,** one of the most renowned Venetian architects, founder and director of TA Architecture, he is active in the field of promotion and care of architectural and cultural heritage since 1994.



**Architect Habibeh MADJDABDI, Owner / Principal Architect Habibeh Madjdabadi Architecture Studio, Iran,** is one of the most outstanding architects of the younger generation in Iran, with almost 15 years of professional experience.

**Presentation: "The Concept of Approximation in Architecture"**



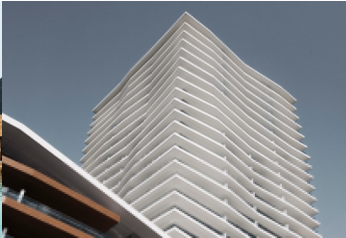
## OFFICIAL PARTNER: ŞİŞECAM FLAT GLASS

**Alberto LAGO, Sales Manager, Şişecam Flat Glass**

**Presentation: "New Technologies in Façade Design"**



**Architect Emre AROLAT**, Co-Founder Emre Arolat Architecture, **Turkey**, an office that has built an impressively wide range of works from urban masterplans, airports to residential, cultural buildings and workplaces. Emre Arolat has the ability to bring a unique view on the future of Architecture, he taught at the Advanced Studio at Yale School of Architecture and was the co-curator of the first Istanbul Design Biennale in 2012.



**DEBATE with Architect Alberto Torsello, Architect Habibeh Madjdabdi, Architect Emre Arolat.**

**BREAK 16.25 - 16.45**

**16.45 - 17.00**



## BOOK LAUNCH

### *"Designing the Profile of the Future Architect"*

An international editorial project initiated via **SHARE International Architecture Forums** - that are organized every year in 10 locations from Eastern and Central Europe- will address the most challenging issues and challenges of the profession.

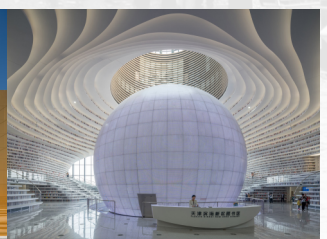
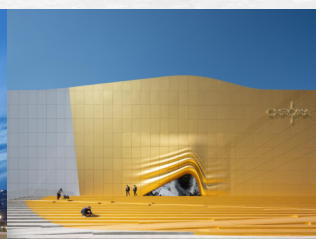
**EDITOR Architect Andreea Movila-Robu**

**SESSION 2  
17.00 - 18.55**

**Architect Paolo BRESCIA**, Partner at OBR – Open Building Research, **Italy**, founded his practice in 2000 with Tommaso Principi. While innovating contemporary living, OBR creates a design network around Milan, London and Mumbai – three of the most important world architectural focus points today – and succeeds very well in doing it given the long list of received awards!



**Architect Fokke MOEREL**, Partner - MVRDV, **The Netherlands**, the award-winning architecture studio in the Netherlands, is an architect that leads projects with a focus on public and cultural programmes, transformations and interior design, in the Netherlands, the rest of Europe, and the Americas.





OFFICIAL PARTNER



**Architect Ian RITCHIE**, Founder - Ian Ritchie Architects, **UK**, one of the world's most thoughtful, original and influential contemporary collaborative architectural practices. The practice is renowned for research and development, and for its innovations. They have more than 30 World Firsts in architectural geometry, engineering and material techniques.

**Presentation: "Light, Shadow and Non-Linear Beauty"**



**DEBATE with Architect Paolo Brescia, Architect Fokke Moerel, Architect Ian Ritchie.**

CONCLUSIONS 18.55 - 19.00

4<sup>th</sup> of October, Udine

## ŞİŞECAM FACTORY VISIT Şişecam Flat Glass Italy SRL "SHARE – MEET THE PARTNER"

**Production:** Flat Glass, Laminated Glass

**Address:** Via Jacopo Linussio, 2, 33058 San Giorgio di Nogaro UD, *Italy*

**Programme:**

- 09:00 Leave from hotel  
FOR THE SPEAKERS, MESTRE FOR THE GUESTS to Şişecam Porto Nogaro Factory
- 10:30-11:00 Arrival to Şişecam Porto Nogaro Factory, Welcome coffee
- 11:00-12:30 Presentation, Factory Visit, Q&A
- 13:00-14:30 Lunch
- 15:00-16:30 Departure to Venice
- 16:30 Arrival to Venice



### ABOUT ŞİŞECAM FLAT GLASS

**Şişecam Flat Glass** conducts Şişecam Group's activities in the flat glass sector; it is **Turkey's flat glass market leader** and a pioneering organization in the regional flat glass market. In terms of its production capacity, Şişecam Flat Glass is the **5th largest company in the world and the largest in Europe**. The company conducts activities in 4 main areas: architectural glass (flat glass, patterned glass, mirror, laminated glass, and coated glass); automotive- and other transportation-related glass products, energy glass, and home appliance glass.

Flat glass production under the governance of Şişecam Group began with "flat technology" at the Çayırova Factory in 1961; the second flat glass furnace was commissioned in 1967. During the following decade, the Group diversified its products; and, with the factory it took over in 1981, the company became the first organization to produce modern float technology in Eastern Europe, the Balkans, Middle East and North Africa bloc. **Şişecam Flat Glass has pioneered many practices in its industry since then and has led in the development of the flat glass industry both in Turkey and in the region.**

**REGISTER NOW!**

[venice.share-architects.com](http://venice.share-architects.com)